

# Fax-Enabling Microsoft SharePoint and Nintex® Workflow 2007®

Nintex Workflow 2007 provides advanced workflow capabilities via a graphical Web-based interface embedded within SharePoint to enable users to automate business processes, review workflow activities, and automate common SharePoint administrative tasks.

Users of Nintex Workflow 2007 now have a streamlined method for fax-enabling automated Nintex workflows: Enterprise Fax for SharePoint.

Enterprise Fax for SharePoint adds these important fax capabilities for Nintex Workflow users/integrators:

- Capability to initiate an automated workflow based on incoming faxes that are intelligently routed to a SharePoint document library.
- Capability for Nintex Workflow designers to easily add the Send Fax action using either of the Add Action techniques available in Nintex Workflow Designer.

## Use Fax Routing Information to Initiate Nintex Workflows

Enterprise Fax for SharePoint uses two forms of information to intelligently route faxes into SharePoint document libraries as searchable PDF files:

- Information extracted from the fax image itself, such as bar code data and specific text strings
- Transmission information associated with the fax (also called metadata), such as time/date of transmission, sender's Caller ID, recipient's fax number, etc.

Nintex Workflow designers can then use these two forms of information as criteria not only to trigger an automated workflow, but also to enhance both the efficiency and intelligence of the workflow being triggered.

### BENEFITS:

- Receives faxes to document libraries as searchable PDF files.
- Uses data extracted from the fax to trigger automated Nintex Workflows.
- Does not require altering or extending the Document Library design in any way.
- Integrates fax capabilities regardless of whether SharePoint is installed on-premises or on a remote server hosted by an Applications Service Provider (ASP).
- Does not require email-enabling SharePoint sites.

**ShareCo**  
123 Main Street  
Boston, MA 01883  
Phone 508-123-4567 Fax 508-334-8878

**PURCHASE ORDER**

FROM: TONY@SHARECO

The following number must appear on all related correspondence, shipping labels, and invoices:  
**P.O. NUMBER: 6792234**

To: Amazon  
1300 1st Avenue South  
Seattle, Washington 98144-2727  
206-266-1000

SHIP TO: John Smith  
ShareCo  
123 Main Street

#	DATE	REQUISITION#	QUANTITY	UNIT	DESCRIPTION	PRICE	TOTAL
1	6/2/2009	John Smith	1	Microsoft Office Share		\$119.00	\$119.00
2			1	Professional ShareP		\$90.00	\$90.00

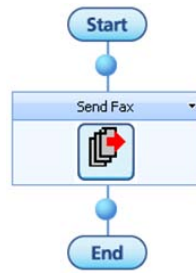
SUBTOTAL	\$209.00
SALES TAX	\$8.00
SHIPPING & HANDLING	\$10.00
OTHER	
<b>TOTAL</b>	<b>\$227.00</b>

1. Please send two copies of your invoice.  
2. Enter this order in accordance with the prices, terms, delivery method, and specifications listed above.  
3. Please notify us immediately if you are unable to ship as specified.

## Easily Add and Configure the Send Fax Action

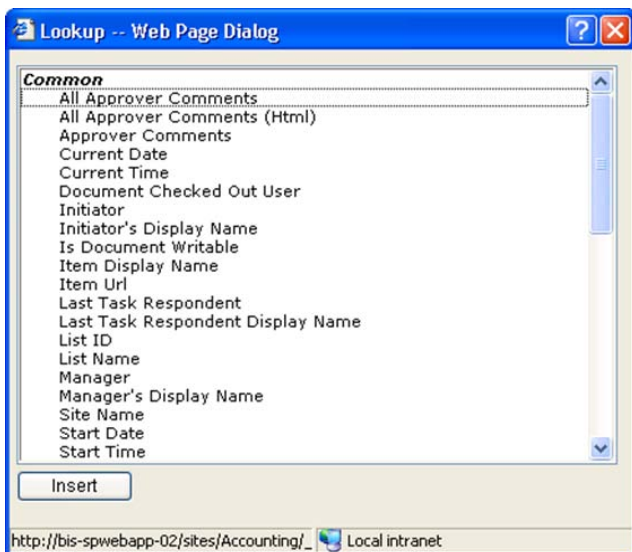
Not only can Nintex Workflow designers easily add the Send Fax action to Nintex Workflow Designer, they can easily configure the action as well.

To add the action, designers either drag-and-drop from the list on the left or select and right-mouse click an Add Action bubble in the workflow flow chart.



When configuring the action on the Configure Action page, Nintex workflow designers can specify:

- Any cover page to use and the cover page information
- Delivery results that determine whether to return fax transmission status messages: ALL, FAILED, NONE
- Email destination for the return of fax transmission status messages
- Transmission priority: URGENT, HIGH, NORMAL, LOW
- Any account number to associate with the fax transmission for tracking costs
- Document Library or Workflow properties to be inserted as field references and resolved to the property's value during run-time



Available Document Library or Workflow Properties

## Integrates Fax with SharePoint Deployed as a Service

More and more businesses are embracing the Software as a Service (SaaS) on-demand licensing model for deploying SharePoint. Recognizing the growing emphasis on cloud computing, Enterprise Fax for SharePoint can be deployed on-premises or as a service. In addition Enterprise Fax for SharePoint seamlessly integrates inbound fax capabilities regardless of whether SharePoint is installed on-premises or on a remote server hosted by an Applications Service Provider (ASP). Enterprise Fax for SharePoint includes a simple configuration setting for specifying the Authentication Method required by the ASP for validating credentials. Once credentials are validated, faxes can be received to the remote Document Library, with the Document Library column headings populated with the relevant information.

### Key Capabilities

- Supports full text searches of received faxes while maintaining the original image.
- Manages document routing without software programming.
- Maintains a history of fax deliveries within SharePoint and with each document faxed.
- Supports copying fax image content into other applications.
- Lets delegated Site Collection/Site administrators determine which document libraries allow outbound faxing.
- Supports using SharePoint over the cloud as a service (SaaS).

### System Requirements

- FAXCOM Server (either on-premises or accessed via Biscom's hosted fax service)
- FAXCOM Suite for Windows Version 9.6.9.4.0 or higher
- FAXCOM Server OCR option (only if data extraction from the received fax image is required)

**BISCOM**

+1 (800) 477-2472  
sales@biscom.com  
www.biscom.com

**Microsoft**  
GOLD CERTIFIED  
Partner  
**NINTEX**