

Biscom's FAXCOM for Xerox

Solution Overview

Solution Type
Faxing

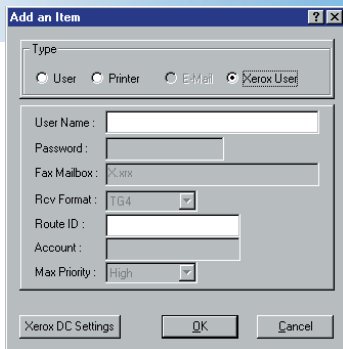
Partner
Biscom

Solution Component
Biscom's FAXCOM for Xerox

Xerox Product(s)
Supported

WorkCentre Pro
35, 45, 55, 65, 75, 90, 32/40, 165/175,
232/238, 245/255, 265/275,
C2128/C2636/C3545

Document Centre
240ST/255ST/265ST, 426ST/430ST,
/420ST/425ST/432ST/440ST,
460ST/470ST/480ST
/490ST, 555ST/545ST/535ST



Utilize the FAXCOM Administrator program to create a Xerox user and assign account information such as user and routing identification.

Biscom's FAXCOM® for Xerox solution provides companies with superior high-volume fax management capabilities that are integrated with Xerox's multi-functional WorkCentre office systems. A single WorkCentre system, integrated with a FAXCOM Fax Server, is capable of deploying network fax capabilities throughout an entire organization. The FAXCOM for Xerox solution provides a robust and reliable means of managing enterprise fax, document storage, and document conversion for even the largest networks.

Users can send faxes from FAXCOM for Xerox by selecting an option from the console of the WorkCentre, from the desktop, or via any Web-enabled device. Designating the WorkCentre as a Xerox user on Biscom's fax gateway enables users to receive faxes from any WorkCentre on your network. Biscom enterprise fax servers extend powerful fax management tools throughout an entire organization by providing multiple methods of sending and receiving faxes with the Xerox WorkCentre or Document Centre.

Biscom is widely recognized for its pioneering advances in the technology of enterprise fax management. FAXCOM Fax Servers operate on heterogeneous networks with a variety of operating systems, messaging applications, and ERP applications, and simplify and control the process of sending and receiving faxes throughout the enterprise. Biscom provides end-to-end fax solutions that are reliable, scalable and flexible. Biscom provides on-site installation, T1 and PBX integration, 7x24 support, application consulting, and expert imaging, network and communications engineering support.

Solution Benefits

- Integration of high-volume fax with WorkCentre
- Deployment of network fax capabilities company-wide
- Multiple methods of sending and receiving faxes from any WorkCentre or Document Centre on your network
- Extends versatility of multi-functional WorkCentre or Document Centre to the entire organization

Solution Specifications

System Requirements

Software

- FAXCOM for Xerox 9.2 or higher
- FAXCOM Suite for Windows 9.2 or higher
- FAXCOM Server 5.5.9 or higher
- FTP Service (such as IIS)

Solution Resources

Biscom Technical Support: 978.250.8355, 8:30 AM - 7:00 PM EST, Monday- Friday

Please provide the following information when reporting a problem:

- Concise description of the problem
- A scenario that you can use to reproduce the problem
- Company name, telephone number, and support plan number (or invoice number and date)
- Biscom product, version, and registration number
- Type of fax board (brand and model number)
- Type of computer, operating system/environment, network and amount of memory

Together, we can
For More Information, Visit
www.xerox.com/partners/xbp