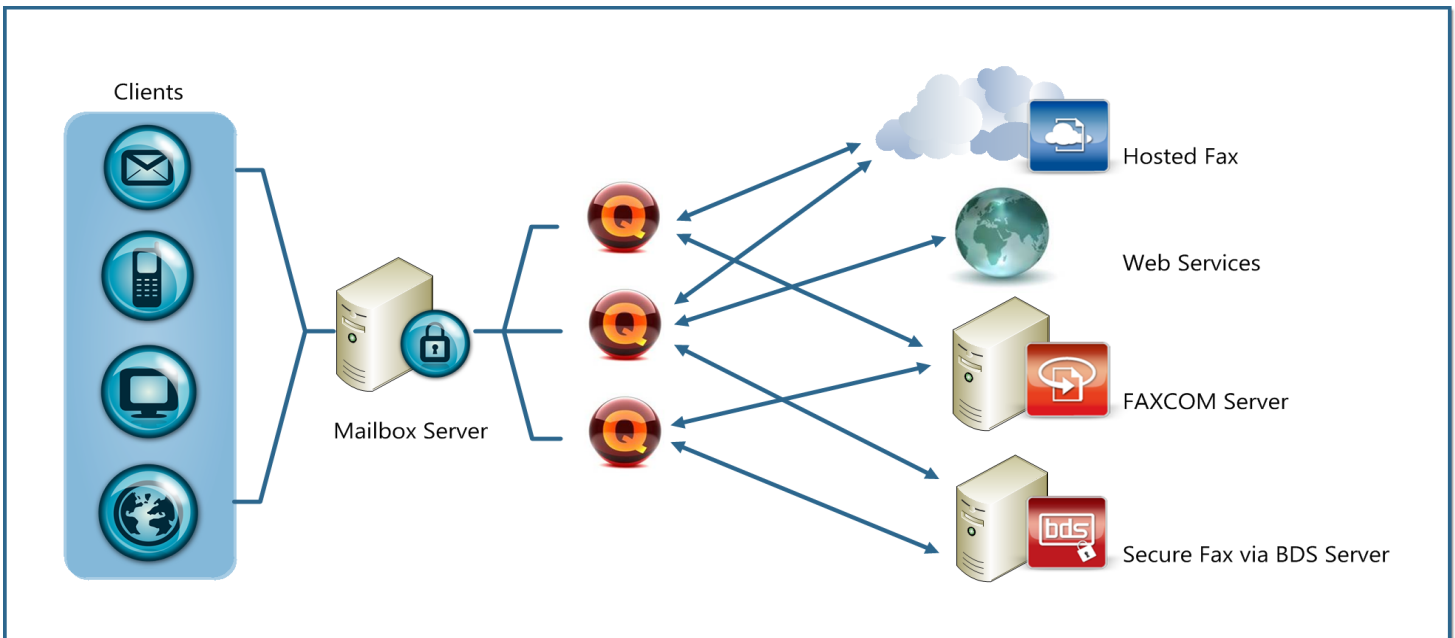


FAXCOM Suite 10.1

Features List

Biscom's FAXCOM Suite is an enterprise fax solution designed to manage your on-premises and cloud fax servers. With FAXCOM Suite, you are able to effectively administer hundreds of fax servers and services, manage tens of thousands of fax numbers, and automate your business processes and workflows to maximize functionality and cost savings.



Client Features

Web and Desktop Clients

- Optimized for fax processing workflows
- Image preview
- Administrative authorization/rejection of faxes submitted by others
- Send to archive, restore from archive, and search archive
- Both summary view and expanded view of fax broadcasts
- Login with AD identity
- Delayed send
- Preview fax before send
- Administrative delegation of privileges to multiple fax mailboxes

- Drag-and-drop to folders
- Forward to: email, printer, fax destinations, other fax users, SharePoint
- Multiple note fields
- Capability to set Out of Office flag
- Fax Viewer enables user to view, rotate, annotate, and split faxes
- Advanced Fax Routing Wizard specifies criteria and actions for rules-based inbound fax routing/processing
- Capability to brand the Web-based fax client and its desktop icon by adding an image such as a company logo
- Section 508 compliant

Outlook Client

- Send faxes via SMTP address
- Determine behavior by Group Policy
- Include Word Mail Merge Macro
- Optional client extension for easier fax addressing and specifying fax options

Mobile Clients

- Users can both send and receive faxes from mobile clients
- Supports both iOS and Android OS

System Requirements

FAXCOM Fax Server

- Version 5.4.601 or higher

FAXCOM Queue Component

- Windows 2003/2008 R2
- .NET v2.0 running on the system where the queue is installed

Mailbox Server

- A server running a release of FAXCOM Suite for Windows that includes FAXCOM Queue version 10.0.0 or higher
- Microsoft SQL Server (2005/2008)
- A Windows Server 2003/2008/2008R2 system on which to run Microsoft SQL Server

SMTP Gateway Component

- System running Windows Server 2003/2008/2008 R2 with IIS installed. For IIS, FAXCOM Suite for Windows requires only that the SMTP Service be running.

Outlook Fax Extension

- Outlook 2003 with SP2, Outlook 2007/Outlook 2010

Web Client Component

- A Windows 2003/2008 IIS Server running IIS 6.X or higher

FAXCOM Client for Windows

- Windows XP/7/Vista 32- or 64-bit

Mobile Clients

- iOS
- Android

Secure Fax

- Biscom BDS Secure File Transfer, either on premises or hosted, for secure fax integration.

Administration Component

- Windows XP/2003/7/Vista/2008/2008 R2

Software Features

Mailbox Server

- Use of native Active Directory to implement a single sign-on for the new client users
- Option to encrypt data (all sent and received faxes) at rest in the Mailbox Server data store; each fax has a unique 256-bit AES encryption key
- Scalability that enables more users to connect to a shared fax mailbox
- Separate database (metadata and data store (fax messages)
- broadcast capabilities in the Mailbox Server-based clients
- Custom archives which can be configured to meet various business rules
- Search previously sent/received faxes based on metadata or user defined fields

Queue Services

- Fax user management integrated with AD group policy; uses Windows login credentials
- Easily installed and administered via MMC Snap-in
- Up to 12,288 fax ports per Queue
- Failover – automatically redirects to any network fax server(s) or to the cloud
- Dynamic load balancing distributes outbound jobs based on fax server fax port availability
- Hunt Group size assignment - Define maximum simultaneous calls to same fax number
- Resend from point-of-failure – retains original page numbering
- Least-cost routing across all fax server ports

Integration

FAXCOM Suite integrates various Microsoft Windows components and networks with FAXCOM Servers. While the FAXCOM Servers perform the transmission, reception, and translation of faxes, FAXCOM Suite deploys the FAXCOM Queues that perform the integrations.

- Administer all fax service components via MMC Snap-in
- Integrates with Microsoft Exchange 2013/2010/2007/2003 via SMTP
- Integrates with Sharepoint 2012
- Integrates with many MFPS from the following manufacturers:
 - HP
 - eCopy
 - Sharp
 - Xerox
 - Lexmark
- Integrates with Biscom Secure File Transfer for secure fax
- APIs include:
 - FAXCOM SDK
 - .NET
 - Web services
 - COM
 - Java
 - SMTP
 - LPR and LPD (printer interfaces)
 - File drop (envelope spec)
 - File templating (DocFlow)

About Biscom

Founded in 1986, Biscom pioneered the fax server and hosted on-demand cloud fax marketplaces. Biscom has provided many of the world's largest companies with secure communications solutions, most notably its award-winning enterprise FAXCOM® Server and FAXCOM Anywhere hosted cloud enterprise fax solutions, Hybrid Fax Platform, Biscom Digital Fax, File Conversion software, and Biscom Secure File Transfer and Collaboration products.